

February 2020



THE
Cresset



News, views and what's on, in and around Bottisham

REMEMBER THE GREAT VILLAGE FETE IN JUNE THIS YEAR?

Following the success of last summer's Community Fete,
a similar event is being planned for

**Saturday 6th June 2020
on the Primary School Field**

All organisations from the village and surrounding villages
are welcome to take part in the event.

It is again intended to be a fund raising/showcase event for
the benefit of your organisation.

If you would like to have a stall or pitch,
to share your ideas,

please email bottishamvillagefete@hotmail.com

The Village Fete for all the Village.

FEBRUARY ALREADY!



Now we are well past the frenetic season of Christmas etc., I hope you are getting back to the routine of normal life.

With January past, have any of your resolutions lasted? If so, well done. I tend to avoid making resolutions as I would likely get depressed with the number which I broke!

Doom merchant time now.

The world is slowly waking up to the thought that we really do need to change the way we live our lives. The changes that man has made in the last 200 years does not sit comfortably with the stability which lasted for previous millennia. We are all beginning to see the effect that our lifestyles have had on the environment and that the world resources are finite. Change will not be easy and may need to be forced upon us, but every small change can help.

Recycling is easy to do and is a major first step. Using plastics for more than one time helps too. Not using plastic at all is even better. Supermarkets are making small gestures, but they need to do a lot more. 50 years ago (no time at all really!) there were no plastic bags in supermarkets. Fruit and veg was not wrapped twice to carry it home, just to be unwrapped again. That is the sort of thing they need to rethink.

Our cover this month heralds the first signs of spring. The snowdrops come first then the crocuses and soon we will have daffodils and tulips. Before we know where we are Easter will be upon us.

Speaking of crocuses, did you know that Saffron Walden in Essex is so named as it used to be the centre of a thriving Saffron trade. The expensive spice which comes from the stamen of the crocus flower was cultivated and gathered in great amounts in that area, back in the middle ages.

There has been and still is a lot of comment and discussion on the proposed major development in the village. From the articles and letters that have been published in *The Cresset*, there is a clear feeling that this will not be good for the village and is being proposed against the clear wish of the community. Let's hope that those who are making the decisions about what will be done or not, take account of the local view. It is also noted that the proposal for this development comes from parties who do not live in Bottisham and would not be affected by it.

There are lots of other items of interest in February's *Cresset*, with reports from the many and varied organisations we have in Bottisham.

If you have news or views on what goes on in your village then do let us know what they are.

Upcoming events include quiz nights at the Social Club, drama from St Mary's Players, jumble sales in Lode and a litter picking day amongst many others.

(continued on page 2.)

(continued from page 1.)

While the litter picking day is being organised by Lode Parish council, they are proposing a joint approach to tackle Lode Road and other surrounding roads. If you can spare the time, then an hour tidying the approach roads to our village would be a great thing to do. Even better would be if Bottisham Parish council joined forces for planning the day.

Enough of my meanderings. Enjoy the month of February and remember, if you do have a Valentine, then do send them a card S.W.A.L.K.

More next month.

Your Editor

Bottisham Library Association

Difficult to find something to report on this month. We were closed for nearly a fortnight over Christmas and are now busy with the returned books and jigsaw puzzles taken out.

The year ahead promises to be busy with an updated computer system to get to grips with, a cupboardful of donated books to process for putting on the shelves or for our next book sale at the Club Craft Fair in the spring and the necessary weeding of books not issued lately.

Dreadful report in the Sunday Telegraph of books at the British Library that have been defaced. It only relates to .002% of the total stocks held but in 5 years over 400 pages have been spoilt or removed. The valuable volumes that have suffered are Christian sermons, pictures of male nudes and dozens of pages from Autocar volume 1. What a world.

There is a separate advert for our 6th Annual Library Quiz on 8th February.

Please support us. It is our major fundraising event

Sylvia Overton

Letter

Dear Editor,

Regretfully I have to tell you that over the weekend of the 10th-12th January 2020 the Scout Hut in the High Street was vandalised on the outside by Graffiti. The most heart-breaking thing was that the vandals sprayed paint on two of the new windows – the windows we fund raised more than £20,000 for, over several years. By the time you read this we hope that we will have able to remove the offending paint. Obviously, we will be revising our security over the coming weeks (more fundraising) but if anyone is out and about in Bottisham near the Scout Hut – please have a glance at the building. If you see anything suspicious don't approach, but please ring the police. They are aware of this crime.

The Scout Hut is used by over 70 local children every week, not to mention several local bands for practice, the Devils Dyke Morris men for rehearsals and many children's birthday parties and community events. It would be such a shame if further damage put it out of action.

If anyone has any knowledge about the vandalism then I'd be happy to receive an email, which I can pass to the police.

Linda (Jones) - Chair 1st Bottisham Exec Committee - lindakinglouis@aol.com

Contents

Services in the Anglesey Benefice in February.....4	Bottisham Community Sports and Social Club17
RENEW Church4-5	Sales, Wants and Swaps.....19
Developments in Bottisham.....7	News from Bottisham Medical Practice Patients' Participation Group25
Planning Notes9	Cambridgeshire Fire and Rescue Service.....27
Parish Notes9 & 11	Mothers' Union27
District Councillors Report11	Public Transport Matters.....31 and 33
East Anglian Air Ambulance13	Thoughts of a Sports Nut...43 and 45
Bottisham and District Gardening Club.....15	Jolley Old World49 and 51
Lode Monkeys15	

Bottisham WI

Sadly we began the evening with a minutes silence to remember Shirley Morley who had belonged to and was a good supporter of our institute for 36 years. She will be sadly missed.

We had an enjoyable Christmas Party at Queen's Court in December, an excellent venue with its large tables ideal for a social evening. We sang carols, had an excellent choice of food (we each brought a plate of goodies) and wine and fruit juice were provided. We completed the evening with an interesting Christmas Quiz arranged by Susan Mersh. The social aspect of this was much appreciated. The raffle proceeds of £81 were sent to The Sick Children's Trust a Charity that provides accommodation at Addenbrookes Hospital for parents whose children are in hospital there.

Our Annual Christmas Dinner was again held at the Newmarket Golf Club another good venue and we finished the evening with a good rendition of the 12 Days of Christmas ably led by Richard Morris.

Our next meeting is on Tuesday 18th February 2020 at Queens Court at 7.30 pm. The speaker is **Rachel Farnham** who will be demonstrating the **Art of Sugar Craft Roses**.

Visitors and new members are most welcome.

Sylvia Overton

Services in the Anglesey Benefice in February

Sun Feb 2nd	8 am	Holy Communion (BCP) at Swaffham Bulbeck
	9.30 am	Follow the Star service in Quay Village Hall
	11 am	Follow the Star service at Bottisham
Wed Feb 5th	8 pm	“C by C” (Short candlelit meditative service) at Bottisham
Sunday Feb 9th	9.30 am	Village Communion at Swaffham Bulbeck
	11 am	Family Holy Communion at Lode
Sun Feb 16th	8 am	Holy Communion (BCP) at Bottisham
	9.30 am	Holy Communion at Quay
	11 am	Family Service at Swaffham Prior
Sun Feb 23rd	9.30 am	Children’s Church at Lode
	9.30 am	Morning Worship at Quay
	11 am	Holy Communion at Swaffham Prior
Wed Feb 26th	7.30 pm	Ash Wednesday Holy Communion at Quay



RENEW Church

I'd like to continue with the series of 'living the questions' by posing this question for you to ponder and respond: If you are part of a church family, "Why are you part of a church family?" and if you are not, "Why are you not part of a church family?"

Your responses will be many and varied I expect, and I am interested, so feel free to share your responses with me. If your response to the question 'Why are you not part of a church family?' is 'because I don't feel I'd be welcome or accepted as I am', I want to say something to you now that I really hope and pray you will hear deep in your being.

Firstly, I'm sorry. I'm sorry that you have formed that opinion of the church. I'm especially sorry if something that you have experienced in church or something a Christian has said to you leads you to question whether there's a place for you or whether you will be accepted as you are.

Every month, I say in this article that you would be welcome to join us at RENEW Church, but I am increasingly conscious that not everyone feels included in that broad invitation or welcome.

In 1 Corinthians 12.12-27, the metaphor of a body is used to describe the Church (by the way, when I say 'the Church', I mean the people who gather to worship not the physical building that they meet in). The message is, that we are simply incomplete when one part of our body is missing, or when one part of our body is considered less honourable, or dispensable.

When someone who desires to follow Jesus and be part of a church community keeps away for fear of not being welcomed / included, it's like part of our body is missing and therefore the body is less resilient and able to cope with the storms of life when they come. Equally, if an established member of a church community excludes another person from being part of the church community, it is like one part of the body cutting off another part of the same body.

Anyone with a physical disability knows how challenging daily life can be. It is physically so much harder to stand and do the things we are called to, day by day, with a part of our body either missing or not working effectively. The same is true on a spiritual level. With parts of our body (the Church) not connected for whatever reason, the family of faith is incomplete. This saddens me. If you have the desire to be part of a church family but don't feel you'd be accepted, I pray you'd have the courage to step into a church. Challenge me, enable me to prove to you that my words are true and step through the doors of Bottisham Primary School on Sunday morning, join us at RENEW Church. You are welcome.

Revd. Alan

RENEW Services for February 2020

**Sunday Morning worship is held at Bottisham Primary School
The services begin at 10.30 am**

Croissants and drinks are available from 10.10 am.

Everyone is welcome to all our services

We have activity groups for children and young people

For more information about any of the activities of RENEW Church please contact:

Rev. Alan Brand on C.812558.

Email: alan.brand@renewchurch.org.uk

Or visit our website at www.renewchurch.org.uk

Copy deadline for next issue is 14 February.

*Please send material to the editor
at BottishamCresset@gmail.com*



An accountancy service based in Burwell that covers everything your business needs

For more details contact Paul on

info@cb25accounting.co.uk

07803 782423 cb25accounting



Sales, servicing, repairs and sharpening of all types of garden machinery.

Collection and delivery available.

Friendly, local and professional service.



C.W.KIRK LAWMOWERS

01638 744 349

CWKIRKLAWNMOWERS.CO.UK

44 NEWMARKET ROAD BURWELL CAMBRIDGESHIRE CB25 0AE




SAME DAY SECURITY SERVICES

OUR SERVICES

- Locksmiths
- Key Cutting available
- Wireless Alarm Installation
- Available 24/7
- No Call out charges
- Free estimates

Call **Peter Martin** 07989 954682 | 01223 967407

Email : peter.martin@lockswift.co.uk
Web : www.lockswift.co.uk/locksmithsincambridge



Developments in Bottisham

I have received several letters and comments regarding the recent plans for development in Bottisham. There were several last month and here are some follow up and additions to them. It is clear that there is a feeling that enough is enough and allowing others to profit from the degradation of our village is not acceptable. Editor Peter Walker

4 Houses at First Copy

I too was very heartened by the response from various quarters, significantly from the Partners at the Bottisham Medical Practice about the retirement village. While I wholeheartedly support the campaign to protect the green space that is Bottisham Meadows, I believe the whole village and its residents need to be protected from this type of development so it is not simply a matter of finding an alternative parcel of land. The village has a nice balance of young and old, 2 enviably successful schools and 2 facilities for elderly people in varying states of health and decay! In some respects, Bottisham is already a retirement village and the addition of 170 more houses, accommodating up to 340 more elderly residents, is unthinkable.

Jacky Lord

BOTTISHAM COMMUNITY LIBRARY ASSOCIATION



SATURDAY 8th FEBRUARY

7.00 FOR 7.30 p.m.

BOTTISHAM COMMUNITY SPORTS & SOCIAL CLUB

£8.00 PER PERSON

TO INCLUDE PLOUGHMANS

Maximum 6 per table

Please contact

Margret Coles 812199 to book a table

ANGLIA TREE CARE

LARGE ENOUGH TO COPE • SMALL ENOUGH TO CARE

80% OF OUR WORK IS VIA RECOMMENDATIONS
TREE SURGERY & FELLING • HEDGE MAINTENANCE
STUMP GRINDING • FULLY QUALIFIED
FULLY INSURED • 24/7 SERVICE
All work carried out to BS 3998

Free Estimates Given within 7 days

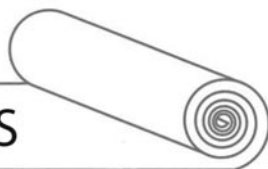


Tel. 01223 424454 • INFO@ANGLIATREECARE.CO.UK

M E M B E R
Guild of Master Craftsmen

PETER FISHER

CARPETS - WOODS - VINYL



A wide range of floorings supplied and fitted.
Please call for a free estimate and select in your home.

Tel: (Bottisham) **01223 811321**
Mobile: **07879 494 685**

Great service for
30 years

Planning Notes

19/01651/VA 139a High Street Variation of Conditions 1 (approved plans) and 3 (vehicle parking) of previously approved 05/01137/FUL for demolition of existing house & construction of 4 no. 3 bed houses and garages. Resubmission of 10/000478/VAR NEW APPLICATION

19/01179/FUL First Copy Corporation Ltd, 187 High Street, Erection of four dwellings
APPLICATION REFUSED BY ECDC

19/01574/VAR Former police station, Bell Road, To vary condition 1 (approved plans) of previously approved 16/01464/FUL for redevelopment of former police station, construction of 9 no. flats

APPLICATION APPROVED BY ECDC

19/01613/FUL 6 Cedar Walk Proposed new ground floor rear extension, 1st floor extension and new entrance porch to front, APPLICATION APPROVED BY ECDC

Parish Notes

Before our January meeting, we had a presentation by Sheryl French from Cambridgeshire County Council. In May 2019 the County Council declared a climate and environment emergency and as part of this they are designing a strategy to tackle the many issues involved. They are looking at how we can reduce or prevent carbon emissions and cope with the effects of climate change. This includes use of renewable energy.

The County Council target to reduce the carbon footprint by 50% by 2023 compared to 2018 levels and to deliver net zero carbon emissions in Cambridgeshire by 2050.

Following on from the problems we have with flooding, our County Councillor Mathew Shuter reported that Highways have made an order for re-cleaning, a camera survey and full report on the drainage problems at Lode Road. We have been complaining about this problem for many years, but Highways have now accepted that there is a genuine problem, suspecting a collapsed drain. Recent flooding has prompted C/Cllr Shuter to look at the legalities of flooding on roads. Highways are only responsible for water that falls on roads. Water falling on grass verges/fields is the responsibility of the landowner, but this is difficult to enforce. How can Highways make local landowners keep their ditches clear and provide good drainage? With changes in weather patterns this problem will increase. Highways do not currently have the power to do anything about it. The County Council are looking into this as it is not just rainwater that flows off land, but also grit and mud contributing to blocked drains.

County Councillor Shuter also reported that the path on the A1303 from Bell Road to the High Street (Hilton Park end), which we have been enquiring about, will be repaired in the next financial year -which is good news. He was also pleased to report that, after a survey, it has been agreed that the A1303 Heath Road/Dullingham junction on the road to Newmarket will be made into a staggered junction to improve road safety.

Continued on page 11

SG LAW

Plumbing & Heating Services

Cambridge based plumbing,
heating and specialists in
bathroom installations

Services include

- Plumbing
- Heating & Servicing
- Bathrooms
- Commercial

T: 01223 812280 M: 07747552232 E: hello@sglawplumbing.co.uk www.sglawplumbing.co.uk



Saffron Salt Supplies

Water Softener Salt

Salt tablets in 25 or 10kg bags

Block salt in 2x4kg packs

Dishwasher Salt

Granules in 10kg bags

De-icing Salt

White crystal in 25kg bags

delivery **FREE** to your door
visit our website for full listing

www.saffronsalt.co.uk

Place your order by phone

07980 581815 or email

info@saffronsalt.co.uk



N.C.S.

**BRUSH ELECTRIC SWEEP
ALL CHIMNEYS SWEPT**

- BIRDS NESTS REMOVED
- OIL & GAS BOILERS
- SOLID FUEL, STOVES FITTED
- SMOKE PRESSURE TESTING
- INSECT MESH, POTS, COWLS
- FLUE LINERS SUPPLIED & FITTED
- BIRD GUARDS & TERMINAL FITTED
- GUTTERS CLEANED & REPAIRED
- GENERAL PLUMBING WORK

**FOR FREE QUOTE CALL
07824 727277 or 01638 662760**

EMAIL
NCS.NEWMARKET@YAHOO.CO.UK

WEBSITE
www.ncsnewmarket.co.uk

*Send text or e-mail for 10% discount
Answers within an hour. • Waiting time approx. 1-2 weeks

**VERY CLEAN • Public liability insurance
- Competitive rates -**

Continued from page 9

We have not yet received the planning application for the proposed retirement village but expect it very soon. The Parish Council will have a public consultation with the village once we have received the application

A magnetometry survey requested by the National Trust has taken place on the land at Lode Road that we are hoping to utilise for a new cemetery. Following this we are hopeful we can now move forwards to compulsory purchase.

Lastly, we have a small sum of money available as a grant to local clubs, organisations and societies. If you are part of such a group who are looking for some funding towards equipment, repairs etc. please make contact with myself for an application form.

Claire Fullwood - Parish Clerk clerk@bottishampc.co.uk

District Councillors Report

East Cambs will shortly be sending out a questionnaire about buses, walking and cycling. This is to provide the evidence for the District Council's own policies and for our response to the Combined Authority's consultation on buses. Details will be sent to each household and you will be able to respond on-line or by completing the form and posting it back to the District Council or dropping it to a drop box in each village. Public transport, cycle paths and pedestrian safety are all issues which are raised frequently with John and I, so we will be holding meetings to discuss your views as part of the consultation exercise. You are due to receive your questionnaires between 9-14 March, so we will arrange meetings around this time and advertise them in next month's village magazines.

The Council has also launched an Ideas Forum to collect ideas on how to make East Cambridgeshire carbon zero by 2050. If you would like to submit any ideas, you can do so at - www.eastcambs.gov.uk/climatechange or by email - climatechange@eastcambs.gov.uk or by calling Customer Services on 01353 665555. The Council will be putting together its strategy for discussion in April.

The Council Meeting scheduled for January was cancelled, due to lack of business, so the next meeting is on 20 February. This is likely to be a busy meeting because it is the meeting at which the Council will agree the budget for the year from 1 April, together with items which would otherwise have been addressed at the meeting in January if it hadn't been cancelled. The meeting of the Finance & Assets Committee will be held on 6 February. We hope that the audit of the Council's accounts to the year ended 31 March 2019 will be complete and we will have a revised set of accounts correcting the errors identified during the audit. It is clearly important that we understand the Council's true financial position as at 31 March 2019, including that of its Trading Companies, before we agree the budget for the year from 1 April.

Our next Councillors' Surgery is on Friday 28 February at 6.30 in Swaffham Prior Village Hall, followed by meet your councillors at the Red Lion pub. Our following surgery will be on Tuesday 24 March in Lode.

M&P

LANDSCAPE AND DESIGN

Patios, Block Paving, Fencing,
Turving and all Gardening needs.

References available on request.

Local tradesman • Free estimates

PLEASE CALL

01223 811144

MOB **07837 358550**

N & G Marsh of Burwell Engineers

For all your metalwork requirements

- ❖ Welding Services
- ❖ Handrails
- ❖ Security Bars
- ❖ Gates
- ❖ Mower Repairs
- ❖ Tow bars
- ❖ Metal Railings
- ❖ RSJs Supplies

Services to the Building Industry
Tractors & Agricultural Machinery
Repaired

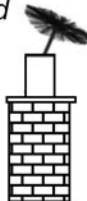
Tel; 01638 741354 or 741 926

R. BRISTLEY Est. 1974

9 Collings. Place Newmarket CB8 0EX

BRUSH ELECTRIC SWEEP

- *All Chimneys swept*
- *Solid Fuel, Oil and Gas*
- *Cowls, Nets and Pots fitted*
- *Carpets Cleaned*
- *Stoves Serviced*
- *Competitive Prices*
- *Very Clean*
- *Public Liability Insurance*



*also Classic Wedding Car Hire
White Citroen DS21*

Tel: 01638 662439
www.rbristley.co.uk

JCM

*Property Maintenance
Ltd*

**For the best in
Renovation,
Redecoration
& Repair**

Contact Joel Clarke-Morgan
On 07885 586229
or e-mail; JCM@weyr19.co.uk

www.jcmpropertymaintenance.co.uk
47 Edinburgh Rd, Newmarket CB8 0QE

SUPPORT ‘MISSION 24/7’

The time of day or night should not determine what level of emergency critical care one might receive in a life-threatening situation. Our vision is to become a life-saving service that is operational 24 hours a day, seven days a week this year - but we need your help to achieve it.

To operate a 24/7 service across East Anglia we need to raise an additional £1 million each year, on top of the £12 million or so that we already need. With your support, we estimate that we could attend up to 600 additional missions and be there for over 400 more patients who need our help - every year. Together we save lives

Since its inception, the primary role of EAAA has been to save lives and minimize the short and longer term impact of dangerous medical conditions or accidents. This will always be the case.

However, the Charity’s remit has broadened considerably from the early days of the millennium and now also encompasses ongoing training of both staff and members of the public. On encountering a road traffic accident, a cardiac arrest or any number of critical situations, knowing what to do, and what not to do, can be critical to the ongoing welfare of the individual(s).

The McQueen Charter is designed to guide Helicopter Emergency Medical Services (HEMS) on the best way to support the mental health of those who work in any role within the sector. EAAA is proud to have been involved in its development alongside the McQueen family and other air ambulance organizations. The Charter is named after Dr Carl McQueen who worked in the air ambulance community and died by suicide in 2016. Whilst its roots lay with Dr McQueen, the charter actually covers all individuals engaged in the delivery of the service, not just crew or defined employees. We encourage people to read it, even if they don’t work for an air ambulance, as there are lots of good practices which could apply to any workplace.

The McQueen Charter has already made a huge impact at East Anglian Air Ambulance, encouraging us to deliver various workshops and talks for our staff on the subject of mental health and it’s introduction to certified Mental Health First Aiders across the charity. We now have 25% of our staff trained on this topic, with more staff keen to be trained, which is well above the Mental Health England target of 1 in 10 employees.

If you would like further details on the Charter please contact info@eaaa.org.uk or phone **03450 669 999**.

As usual, a huge THANK YOU to all who so generously and continually support our work.

Michael White



**Our roots are in
your community**

**Every home
we sell or let, we
will plant a tree locally**

IN PARTNERSHIP WITH



**carbon
footprint**

Bush is one of Cambridge's leading sales and letting agents and we offer expert advice and a full professional service to property owners in Bottisham. Discover the **Bush** difference and join us on our **GREEN** journey

bush
sales

01223 246262
bushsales.co.uk



01223 508085
bushlettings.co.uk

bush
lettings

Established. **Independent.** Passionate.

WANTED

**POLITE, LOCAL BUSINESS EST. 25 YEARS
IS LOOKING TO BUY THE FOLLOWING:**

- Furniture • Quality jewellery and Costume jewellery • Collectables • China, glass, ceramics • Old toys • Silver, silver plate, old copper & brass
- Militaria - uniforms, medals, weapons • Old tools
- Old garden ornaments • Anything considered

Polite & confidential service. Good prices paid.
Please call: Steve Durrant 01638 507037 / 07740 591194

Bottisham and District Gardening Club

Our Christmas meeting was not as expected as Sylvia and John Overton were unable to show their presentation of "2019 Another Good Year" due to illness. They are on alert to show this if we have a speaker problem during the year.

It turned into a successful evening though as we sat and enjoyed nibbles and mulled wine. The club members competition for the RHS Grenfell Medal was won by Dora Gale. There were several entries for this - a Christmas arrangement - and Dora had made an elaborate silver cracker. We later mostly adjourned to the Main Hall at the Club to listen to the excellent Newmarket Town Band who entertained us with Christmas music Carols and well - known music

Our next meeting will be on **Tuesday 25th February 2020 when Chris Field from Field Compost** will be telling us about "the Art of Composting"

We meet in the Poppy Room at the Club and start at 7.30 and new members and visitors are most welcome.

Sylvia Overton

Lode Monkeys

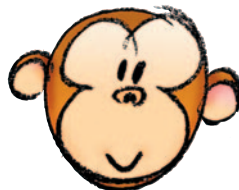
Thursdays 9.30-11am (term time)

Lode Chapel - £1/family

SPRING TERM DATES -

9th JANUARY - 26th MARCH - EASTER PARTY!

(Half term - no session on Thursday 20th February)



We are a stay and play toddler group for pre-school kids and their adults who meet every term time Thursday in Lode Chapel. We put out various toys and let the kids dive-in! Each week we have a different craft activity and a song time to finish with scarves and shakers. So far this term we have made shape penguins, snowmen and snowdrop pictures.

Crafts to look forward to - daffodil pictures, heart weaving, Mothers' day cards and Easter bonnets.

There is tea and coffee for the adults, and breadsticks and raisins for the kids. And usually biscuits too!

It's a very relaxed and friendly group and a good place to chat and get to know each other. Do drop in for a play!

(For more info, directions etc. check out our Facebook page or contact Laura on l.overton.83@googlemail.com)

(Thursday 23rd first session back after the Easter Holidays)

SOMETHING TO SUIT EVERYONE

Air conditioned fitness suite including:

- Zumba,
- Spin,
- Pilates
- Kettlebells and much more!
- 25 metre, 4 lane swimming pool
- even birthday parties!



For availability and bookings simply contact 01223 811121 or email sportcentre@bottishamvc.org



MEMBERSHIP ONLY £23.50 Including Swim, GYM, Badminton, Tennis & Fitness Classes

BOTTISHAM SPORTS CENTRE GREAT VALUE

SWIM LESSONS
START AT **£22** PER MONTH



  facebook.com/BottishamSportsCentre

For more information call **01223 811121**
or e-mail: sportcentre@bottishamvc.org





Bottisham Community Sports and Social Club

CAMRA Cambridge and District Club of the year

WEBSITE- www.bottishamsocialclub.co.uk

The website now has details of all beers being sold with the guest beers regularly updated. If you haven't previously been in the club have a look at the website then come and give us a try. Membership is only £20 per year.

Take a look at the website calendar for future events.

WHAT'S ON

LOADED DICE - SATURDAY 14TH MARCH

in aid of this year's chosen charity- The Teenage Cancer Trust. All door proceeds to be given to the charity.

EASTER FAIR - SUNDAY 5TH APRIL

CHILDREN'S DISCO- SUNDAY 12TH APRIL

BEER FESTIVAL WEEKEND SPRING BANK HOLIDAY (FRIDAY 22ND MAY TO MONDAY 25TH MAY)

**Friday Evening - Neil Flynn Saturday Evening - The Underdogz
Sunday Evening - AJ's Karaoke**

EVERY FRIDAY NIGHT - PLAY YOUR CARDS RIGHT (Jackpot over £2,200 at time of going to press)

MEMBERS DRAW - BETWEEN 9PM AND 10.30PM

Just must be in the club to win.

Also, Meat Draw every Friday night.

PLAY YOUR CARDS RIGHT - FROM THE 7TH FEBRUARY

one card will be removed each week until either the jackpot is won, or all the bottom row has been removed.

Going forward the bottom row will be removed to make the chances of someone winning the jackpot more likely. When the jackpot is won the new jackpot will start at £500.

BT Sport and Sky Sports available throughout the year. Why not come along and watch your favourite team with company and a great pint.

Don't forget the regular activities for you to join in and enjoy

Darts / Pool / Snooker / Billiards / Cribbage / Dominoes / Bar billiards/Table Tennis

Also Hall and Poppy Lounge room hire available for all your functions

Well behaved dogs are welcome in the main hall and must be kept on a lead.

bottishamcsasc@gmail.com www.bottishamsocialclub.co.uk

31 Downing Close Bottisham Cambridge CB25 9DD Tel. 01223 812063



SANICLEAN

DRAIN & PLUMBING SERVICES

R. BRISTLEY Est. 1974

9 Collings Place, Newmarket

- *Drains Unblocked Fast*
- *Toilets, Baths and Sinks*
- *Guttering and Downpipes*
- *Drain repairs and CCTV Surveys*
- *High Pressure Water Jetting*
- *Domestic and industrial*
- *All Work Guaranteed*

Newmarket (01638) 662439

Mobile 07970 038404

www.rbristley.co.uk

Functional Movements for Everyday Living



Moves FITNESS

QUY VILLAGE HALL

Mondays 8:00pm – 9:00pm

Dance aerobics for health & fitness

EVERYONE WELCOME

£6.00 per class

Exercise really can be this much fun!

Contact Mel Wilson for more information: 01223 811109



Find me and Moves Fitness on Facebook

mel@mwilson04.plus.com
www.movesfitness.com



My love for dogs

An alternative to Kennels

A personal, caring approach to dog care.

In our home, your dog will receive two hour-long walks every day as well as treats, socialisation with other dogs and the administration of any required treatments.

- Fully insured and police checked
- Licensed by Sth. Cambs. District Council.

For further details call Amanda on
07903 806750

Based In Steeple Morden near Royston.

St. Mary's Players - Swaffham Bulbeck

A Bunch of Amateurs



A comedy by

Ian Hislop & Nick Newman

presented by special arrangement with Samuel French Ltd.
a Concord Company

Thu.20th - £10

Fri.21st. & Sat. 22nd. February - £12

(all prices include glass of wine)

7.30 in the School Hall

ickets: Geoffrey Datson 55 High Street, Swaffham Bulbeck
Tel: 01223 812395
or email: datson@btconnect.com

LITTERPICK THE ROADS AND FOOTPATHS AROUND BOTTISHAM, LODE, QUY AND SWAFFHAM BULBECK

**SUNDAY 2ND FEBRUARY 2020
2-4, WITH REFRESHMENTS
AT THE FASSAGE IN LODE FROM 3.30**

This is our annual litterpick which is aided by ECDC who collect the rubbish on the Monday. Please come and join us either on the day or if you can do a walk or special area beforehand please let us know so we don't send volunteers on the day.

Please bring gloves and we do have some litter picking sticks and loads of black bags which we can give out on the day.

We very much like to have families joining us but request they do the quiet routes leaving the roads to the adults.

The routes we cover are the road and cycle paths to Quy, Bottisham and Swaffham Bulbeck. Within Lode we go along the many walks, the Fassage, allotments, White Fen Drove, Harvey's drove and of course around all our houses. Do come and join us. It always looks so much better and hopefully discourages those who might hurl stuff out of their car windows!

Please put this date in your diary and see you then.

Thank you. Lode Parish Council

Sales, Wants and Swaps



IF YOU HAVE ANYTHING TO SELL OR WANT TO BUY OR EVEN TO SWAP, THEN THIS PAGE IS YOURS TO USE. Send details of Item, price and landline Phone Number to BottishamCresset@gmail.com. Max. 5 Items. Entries by 12th of the month for next months issue.

DESCRIPTION	PRICE	TEL
Child's Bike age 4-6 years	£15 Ono	811092
Microwave Oven	£5	811092
National Geographic 76/350 Dobsonian Reflector Telescope. As New Duplicate present	£60	811402
Brand New Carpet Remnant - Light Pastel Blue/Wedgewood Blue - 287cm x 220cm approx.	£20	812911

K.J.P.

Building/Maintenance



Including:

Design, landscapes, patios, fencing,
gardening, decking, painting,
decorating, tiling, all interior work,
etc.

Tel: 01223 812021 or
mobile 07799 504043

P. Marsh Electricals & Household Maintenance

(Kitchen & Bathroom Refits)

Part-P NICEIC registered Electrician

Testing and certification of electrical systems
Periodic Inspections
Fault finding and repairs
Fuseboard upgrades
New Installations
Full / partial rewiring
Sockets
Lighting
Showers (all types)
Power to sheds / garages
Security and outdoor lighting



General household maintenance from a
dripping tap to a full kitchen/bathroom refit



01638 744 281
07941 107 321
(Based in Burwell)

www.pmarshelectricals.co.uk

**FREE
Estimates &
Advice**



- All Driveways & Block Paving
- Site & Garden Clearance
- Driveway Cleaning & Sealing
- Fencing, Trellis Work & Decking
- Patios & Paths
- Turfing & Seeding
- Concrete Crushing
- Grab Hire & Digger Hire

amsbuildingandlandscaping.co.uk

OFFICE: 01638 721 893 | SITE: 07789 261 266

Rayment's

• Vehicle Servicing & Repairs •

Diagnostic Specialist

MOTs | Servicing | Tyres

Cambelts | Brakes | Air Con

8 Townsend, Soham, Ely, CB7 5DB

01353 655136

raymentsvehiclerepairs@outlook.com

www.raymentsvehiclerepairs.co.uk

OvenPad Cleaning Services

I will professionally & efficiently clean ovens, ranges, Agas, ceramic hobs, extractors, microwaves and BBQs.

It's a dirty job, why not give me a call?

Contact **Paddy Kelly** on
Tel: 01638 742703
Mob: 07752 631343
Email: info@ovenpad.com
Website: www.ovenpad.com

ANDREW EVANS

01954 780 999 – 01223 864335

email: andrew@omegaclean.co.uk
www.omegaclean.co.uk

- ✓ Carpet Cleaning
- ✓ Upholstery Cleaning
- ✓ Tile & Grout Cleaning
- ✓ Leather Cleaning
- ✓ Oriental Rug Cleaning
- ✓ Carpet & Fabric Protection
- ✓ Allergy Relief Treatment
- ✓ Odour Eradication
- ✓ Stain Removal
- ✓ Carpet Fitting

Family Business Since 1980



PEST PROBLEM?

CALL DRE PEST CONTROL

01954 230708

07789 502556

- Commercial & Residential
- One - off Call Outs
- Management Contracts

Cambridge & surrounding areas
www.drepestcontrol.co.uk



BOTTISHAM PARISH COUNCIL

TO ALL LOCAL CLUBS, SOCIETIES AND GROUPS
**DO YOU WISH TO CLAIM SOME
FUNDING FOR THE NEXT FINANCIAL
YEAR COMMENCING APRIL 2020?**

APPLICATION FORMS AVAILABLE FROM:-
Parish Clerk – Mrs Claire Fullwood
Tel: 07914 219732

FORMS TO BE COMPLETED AND RETURNED BY MONDAY 9th MARCH

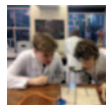
D.K.TILL & SON IN LAW COAL AND SOLID FUEL MERCHANTS

Family run business for 40 years
Coal, Logs, Charcoal, Gas, Compost

TEL: David Till; 01223 232947 - Kevin Crisp; 07523044521
Email: dktil@hotmail.co.uk



LANDMARK
INTERNATIONAL
SCHOOL



A small international school in Fulbourn, South of Cambridge,
welcoming pupils aged from 4 to 16 years.

We have experienced and enthusiastic teachers delivering a broad and engaging curriculum to small classes of pupils from Britain and beyond. We offer excellent pastoral care and are non-selective academically. Transport via school minibuses from central Cambridge and surrounding villages.

To arrange a visit, please call:

Mary Greer on 01223 755100/07400 584015

or email mary.greer@landmarkinternationalschool.co.uk

www.landmarkinternationalschool.co.uk

Landmark International School is a registered charity.

NW BROWN

— WEALTH MANAGEMENT —

Providing bespoke solutions to your
financial planning and investment needs

01223 357131

www.nwbrown.co.uk

NW Brown Wealth Management is a trading name of NW Brown & Company Limited. NW Brown & Company Limited is authorised and regulated by the Financial Conduct Authority (191123).

TV AERIALS

SATELLITE

DIGITAL FREEVIEW

Installations

Extra points etc.

Tuning in of TVs, Digiboxes etc.

Experienced local engineer

RICHARD FORTEY

01638 662119

No Call Out Charge

News from Bottisham Medical Practice Patients' Participation Group

Norovirus spreads very quickly through environments where lots of people are mingling closely, such as schools, nurseries, care homes and hospitals.

Please play your part in stopping the spread of norovirus this winter – just #Think NORO:

- N** No visits to hospitals, care homes and GP surgeries if you are suffering from symptoms of norovirus - send someone else to visit loved ones until you are better
- O** Once you've been symptom-free for at least 48 hours, you're safe to return to work, school or visit hospitals and care homes.
- R** Regularly wash your hands with soap and warm water, especially after using the toilet, and before eating or preparing food
- O** Only hand-washing will prevent spread of norovirus - alcohol hand gels DON'T kill the virus

If you are concerned about your symptoms or need further advice on how to manage the illness please consult your GP or NHS 111 by telephone.

The main symptoms of norovirus are: feeling sick (nausea), diarrhoea, being sick (vomiting).

You may also have: a high temperature of 38C or above, a headache, aching arms and legs.

The symptoms start suddenly within 1 to 2 days of being infected. More information on how to treat diarrhoea and vomiting see www.cambridgeshireandpeterboroughccg.nhs.uk/news-and-events/latest-news/help-stop-the-spread-of-norovirus/

THANKS: Our thanks to patients who have already written to support the Practice in their objection to the proposed retirement village and we would welcome more comments. In addition we are hoping to get a petition set up in the surgery for signatures.

WALKS FOR HEALTH: The next walks with our accredited walk leader Steve Gilson start at 11.00 am from the surgery car park on 12 and 28 February, there will not be one in March 2020. Do join Steve for a walk he would be delighted to see you. Walks from Anglesey Abbey continue on Thursdays at 10am from the reception area.

NEXT PATIENT GROUP MEETING: Next meeting will be **Thursday 26 March 2020 at 6.30pm at the surgery.**

Patients' Participation Group

SHIRLEY MORLEY

The family have been overwhelmed by the wonderful support given during Shirley's illness by friends, neighbours and relatives. We would like to take the opportunity to thank everyone for all the visits, cards, flowers and many other forms of assistance given.

John Morley

Paying too much for your glasses?

Save Money - Buy Direct!

Visit our factory shop to see our fabulous range of Discount Prescription Eyewear

- Hundreds of frames to choose from, including designer frames from Ray-Ban, Polo Ralph Lauren, Oakley, PRADA, Ted Baker and Versace
- Specialists in high and complex prescriptions
- Same-day or next-day service available*
- Save up to 75%
- Huge range of designer sunglasses
- Full range of sports eyewear

Official stockists

*subjecttoprescriptionandavailability



We are open 9am to 5pm Monday to Friday, and 9am to 1pm Saturday



ALL EYES
SPECTACLE MAKERS
EST. 1987

Call us

01954 231545

Visit our website

www.all-eyes.co.uk

20 Norman Way Industrial Park, Over, Cambridge CB24 5QE

SN Handyman Services

A friendly and reliable service for all your general home and garden maintenance.

- ▶ Painting & Decorating (interior/exterior) ▶ Garden Maintenance ▶ Tiling & Glass Splashbacks ▶ Gutters Cleared & Repaired ▶ Power Washing Patios ▶ Sealant Replacement (bathroom/kitchen) ▶ Curtain Poles & Blinds
- ▶ Flat Pack Furniture (assembly) ▶ Shelf Fitting ▶ Small Glazing
- ▶ Conservatory Cleaning ▶ **and more...!**

Free estimates & advice given on all work

References available upon request.

PLEASE CALL

Steven Newton ▶ 07713 859712 ▶ 01223 813701

50 Commercial End ▶ Swaffham Bulbeck ▶ CB25 0NE.



I look upon December to February as the ‘doldrums’ of the year activity-wise – but that cannot be said where CFRS are concerned. All times of the year present challenges to The Service, and winter brings with it, heightened risks to our community and to those passing through.

Prevention is better than cure, a maxim more appreciated within the emergency services than most, where road traffic accidents are concerned

Whatever steps the Department of Transport and our local authorities initiate RTA’s continue to challenge CFRS. It’s no picnic turning out on a cold wet winter’s night to deal with situations where life is at risk.

So, what might we do to help?

One idea is to install onto your mobile phone the ‘**what3words**’ app. Should you be involved in or witness an RTA this ultra accurate positioning tool will route all emergency services directly to the scene.

Also, ensure that vehicles are regularly and fully maintained and serviced, tyre condition is good and pressures are correct – check these weekly. Try not to undertake unnecessary journeys and let others know your plans.

Home safety, so often taken for granted, should be constantly thought about. Not just security day and night but safety, particularly in the kitchen where most domestic fires originate. It’s not ‘rocket science’ ensuring that clothes, tea towels etc are kept well away from naked flames, or even searingly hot electric cooking surfaces.

From CFRS – have a happy, healthy and complete New Year.

P.S. – Keep testing all smoke and CO monitors.

Michael White

For more information or to get in touch contact us at firefire@cambsfire.gov.uk or on 0800 9179994.

Like us on Facebook for regular updates www.facebook.com/cambsfrs or follow us on Twitter @cambsfrs.

Mothers’ Union



Our meetings are usually held on the third Thursday of the month at 2.30pm in Lode Chapel. At our next meeting on 20th February we will be look at our theme for 2020 ”Building Hope and Confidence”. You are most welcome to come and join us.

Copies of our programme for the year are available in all five parish churches.

Ann Langran



Copy deadline for next issue is 14 February.

Please send material to the editor at BottishamCresset@gmail.com

Email info@angliarhearing.co.uk

AN INDEPENDENT AUDIOLOGY CLINIC BASED IN CAMBRIDGE

Hearing Tests

Free Hearing Tests
Detailed Hearing Assessments
Most Up-To-Date Testing Methods

Hearing Aids

Get a hearing aid in a matter of days
Free 30-day no-obligation trial

Ear Wax Removal

Micro-suction • Irrigation • Video Otoscope

Tinnitus Treatment

Fast appointments. Many treatment options
Member of British Tinnitus Assoc.



Grain House, Mill Court, Great Shelford, Cambridge, CB22 5LD

BOOK ONLINE! www.angliarhearing.co.uk • Phone 01223 661399



Saplings

Preschool Playgroup

Based in Bottisham School grounds, we offer lots of fun and structured play with caring, qualified staff in a safe environment.

For 2 years old onward, Monday to Friday
Morning sessions 9am - 12noon



Spaces available for this term

Call **01223 813 226** or see our website at **www.saplingsbottisham.co.uk**

Stitchshed Sewing

(Formerly Little Stitches)

Repairs and Alterations

I am based locally and can help you with clothing alterations & repairs, curtains, blinds and cushions

Sewing Classes

If you wish to learn to sew, then please call for a chat.

Classes at the Stitchshed or private home tuition available for:

- Dressmaking
- Patchwork and Quilting
- General craft sewing

Getting to know your sewing machine!

Tel: 01638 745160
Mobile: 07449 954590
Email: stitchshed@gmail.com
Web: www.stitchshed.blogspot.com

Little legs of Lode Montessori Nursery



Passage Hall
Lode



We have spaces for children aged from 2 years onwards each morning in term time.

The Montessori method allows children the freedom to be creative, to learn and to develop at their own pace in a calm environment.

Please contact Sharon for a prospectus or to arrange a visit.

sharonmaskall1@gmail.com
 Tel: 07572 121463

Morgans Hairdressers

Tel: 01223 811646

Creative styling for the family

- Creative cutting
 - Hair up
 - Colouring
- Colour correction
 - Perming

Open: Tuesday - Saturday, Wednesday
until: 8.00pm



10 Herschel Court, High Street,
Bottisham, CB25 9DQ



Follow us on facebook



footprint Signs & Graphics

The Complete Local Signmaking Service

- All aspects of Vehicle Signage
- Window Graphics & Etching
- Safety Signs
- Shop Fascia's
- Labels , Stickers & Magnetic's
- A-Boards
- Banners
- Full Colour Digital Printing
- Solar Films & Etched Vinyl

Have you a picture you would like on Canvas?

07900 606400

01223 214294

www.footprintsignsandgraphics.com
info@footprintsignsandgraphics.com

SUMMIT



LANDSCAPES

PAVING - DRIVEWAYS - BRICKWORK
CARPENTRY - GROUNDWORKS



www.landscapingpaving.co.uk

PHONE: 01223-929394

Public Transport Matters

I have recently had a phone call from Nigel of Stagecoach to tell me that he had installed a panel with the bus times in the new A1303 shelter and replaced the damaged timetable holder in the old A1303 bus shelter. As regards the damaged part of the footpath at the junction of the A1303 and the High St., as you come across from the new shelter on the way back from Newmarket with the 12, we still have had no positive response from Highways. One person says it doesn't need doing and another says it is on a list. I have had a complaint about it from people and I find it difficult to walk across with my shopping trolley. I use the grass verge. Radio Cambridgeshire has a phone-in hour from 9-10 a.m. every day and today the subject was Highways and their response to problems. It was mainly regarding the road signs since the A14 changes and upgrades. I have not heard of any plans to change the times of the local buses. There have been articles in the papers about the drop in bus travel in Britain due to the rise in fares and cuts to bus routes. It is suggested that a radical government would make bus travel free and help commuters and schoolchildren and travellers generally. Buses arrived in 1824 and in 1950 accounted for 42% of all travel, Now it is 4% - the lowest level since records began 50 years ago. Higher fares and cancelled routes – mostly in less populated and rural areas. Some busy places have only two bus rides a day or even see a bus only twice a week. Lode and Reach are among those villages affected locally. Perhaps the free bus pass should be extended to all is now a suggestion. Stagecoach does offer a range of different ticket choices. They are listed on the timetables and often in or on the buses. Doors are going to be shut on Boris's Routemaster buses as people dodge paying their fares using their Oyster or contactless cards. Is it an extra-terrestrial invasion? No, it is the 100 bus to east London. It is the sound introduced to warn people of the new silent electric buses when the speed is below 12mph or reversing. There has been a £100 k boost which will bring the metro plan for Cambridge closer to reality.

I wrote in December of the welcomed new trains arriving at Newmarket and Dullingham – things then changed. It seems that there were problems with the signals. New timetables have also caused problems on train use including Greater Anglia. I have now obtained some paper train timetables as my son was visiting from Cornwall and interested to see the Cambridge North station. He was a daily commuter to London for many years. The staff member there assured me that there are now paper timetables available in Cambridge main station. Transpennine Express and Northern were among the worst hit as trains were cancelled. There are also staff shortages. The Campaign for Better Transport suggests that there should be a radical overhaul of Britain's railways – scrapping franchising, major fare reform and handing more control of services to city regions. Britain's commuter trains are overcrowded and people can't find a seat. From Cambridge it is 16% and one of the highest rates. South Western Railways is at risk of being renationalised because of crippling financial issues as is Northern Rail. Five major franchises could be at risk and this is causing problems for the government as they need rail experts to help them with the situation.

continued on page 33



**BOTTISHAM
MEETING POINT**

every
WEDNESDAY
10.30am – noon

in the Poppy Lounge
at the Sports & Social Club

A place where you can meet old friends, make new friendships, relax, chat and enjoy coffee, cake and biscuits in a friendly relaxed atmosphere.

EVERYONE WELCOME

ADMISSION FREE

L BOTTISHAM

SCHOOL OF MOTORING

Tel: 811556

*All qualified instructors
with extremely high
1st time pass rates*



Martin Ball
Firewood & Timber Merchant

www.martinballfirewood.co.uk
martinball.firewood@btconnect.com
01799586513 01371830503 07980258003

continued from page 31

Trainline booking service has created a ticket splitting tool on its online app which could save passengers money by issuing multiple tickets to cover different stages of a journey. It is available on 64% of routes. You have to make sure that the train would stop at those stations to ensure it is legal. Virgin Rail is also going to offer a new app. HS2 continues to be challenged due to rising costs, spoiling the countryside, buying up people's much loved homes and perhaps not being on the right route. The £108 billion budget could be better spent on train services and routes in the North – the new Tory heartlands. Rail services between Northern cities are slow and badly connected. Some services have recently been cancelled due to the late delivery of new carriages. New timetables are also late in delivery. The £18 billion Crossrail route through London is now not due until December of next year making it 3 years behind schedule. There are problems completing stations and testing signalling systems. The Flying Scotsman may be forced to use only enthusiast run lines due to the speed of new trains. A new service on the West coast mainline will offer three classes of travel – a different type of first class and also a usual standard class. The Arriva owner has cut fares in Germany but raised them here – this is Deutsche Bahn and apparently it is because the German govt. has reduced Vat. on tickets. Go Ahead group has launched a rail service in Norway – this will be the first privately run service. It will be between Stavanger and Oslo. Just over 100 miles of line in south Wales will be partially powered by renewable energy as part of a project to decarbonise the railways – this will involve solar energy to power overhead rail lines – the first in the world. As Network Rail chop down trees by railway lines, they have promised to plant many trees elsewhere.

Nenta Traintours booklet now available – 01692 406152.

Rail info: 03457 48 49 50 traveline: 0871 200 22 33

Happy travelling! - Paddy James



SATURDAY 14TH MARCH 2020 - FROM 2-4

ST. JAMES' CHURCH, HIGH STREET, LODE, CB259EH

There is a car park opposite the church, where it is helpful if you could leave your car, so reducing congestion in the High Street

Entrance £1 adults and children are free.

Refreshments are served, including tea, coffee and home-made cakes, to keep you going, during or after your jumbling efforts!

Come along and find some bargains. The money raised goes towards community activities and some smaller local charities.

Finally, Jumble sales are a way of reducing waste, by recycling and re-using stuff that might otherwise be thrown away. Come along and join us, and we look forward to seeing you.

D.S. FREEMAN

Painters & Decorators

- Residential & Commercial
- Interior & External
- Fully Insured
- All Aspects Undertaken

duncan@dsfreeman.co.uk

Tel: 01223 812920

Longmeadow

ALAN R. COOPER

BSc(Hons)Pod. M.Ch.S

Podiatrist/Chiropodist • Newmarket

(Est. RC Cooper SR Ch.1934)

Routine Chiropody & Home Visits
 Ingrown Toenails by Local Analgesia
 & Footwarts by Cryosurgery (freezing)
 Briomechanical Assessment + Orthosis
 Instruments sterilised by Autoclave

TELEPHONE 01638 662840
4 Market St., Newmarket CB8 8EE

GERMAN LANGUAGE COACHING

Native German Speaker
 Qualified Teacher
 Coaching to GCSE level

Karin Hulme 812669

E.J. DENSTON

KITCHENS & CARPENTRY

All aspects of Carpentry & Joinery
 New Build 1st & 2nd fix carpentry
 Purpose made cupboards, wardrobes
 & Bookcases

Kitchens supplied & fitted
 Renovations & small build works



Tel: 01223 813279
Mobile 07711 578687

Carpentry Services

TONY MARTIN

Over 30 years experience

*Any carpentry jobs
 undertaken — BIG or small*

Call Tony
 for a free estimate
Tel: 01223 812786
(Bottisham)
Mobile: 07767475987

COGS2COMPUTERS

We are back into the hustle and bustle of a new year and excited for our newest community project, Cogs2Computers, to get underway. This project, funded by the Heritage Lottery, will bring the community together, exploring and having fun with technology, from its origins up to the present day (and beyond!). February will be our first committee meeting and we will be working diligently to organise the activities and outings over the course of the year. Please keep a look out very soon for an update on some of what we will be getting up to.

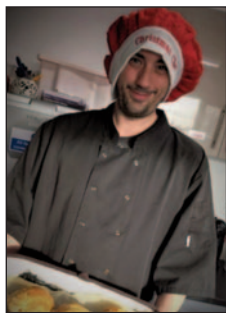
RED2GREEN CAFÉ AND GARDEN

The Red2Green Café continues to open Tuesdays and Thursdays 10am-3pm. We have a menu of hot and cold savoury food and each week we make a selection of cakes. Where possible food is sourced locally. We use Hurrells butchers in Burwell for our meat, and eggs come from Snakehall farm in Reach. The garden is open Monday, Tuesday, Thursday 11am-2pm. We have a variety of plants for sale including hanging baskets and pots.

We are always on the lookout for items that we can reuse and recycle. In particular, we currently need 4" plant pots. If you have old ones you don't need please drop them in to the garden.

We continue to recycle crisp packets and we are raising money to buy recycling bins that can be outside at the café <https://www.justgiving.com/campaign/GreenAtRed2Green>

INTRODUCING NEIL



We would like to introduce you to one of our learners who also works in our café as a sous chef. Neil has autism and has attended Red2Green for just over four years. Neil takes part in Aspirations (our service for autism) and also volunteers in the café. Neil told us: 'Since attending Aspirations I am calmer and quieter. The staff have helped me understand myself, which has helped me with my confidence and ability to help others.

Before Red 2 Green, I tried a distance learning university course in game design, which didn't work for me. When I am not at Red2Green I am at home, watching films and playing video games.

I started working at the RedGreen Community Cafe from the day it opened. Simon said he would like me to come and do a few days there when it was about to open, as I am a fairly literal person I took this very literally and showed up on the first day and have been there ever since. I love helping the other chefs to make things, teaching them new techniques and how to make new products, for example, one chef wanted to know how to make pizza, which I showed him.

The cafe has changed me in a whole lot of ways, my people skills are better, my cooking skills have improved a lot, my ability to work as part of a team is really good and it has given me a lot of confidence in a workplace environment.'

You can meet Neil at the café on Tuesdays. Do come and say hello!

S. NEAL
Carpentry and Small Works

Offering a high quality carpentry and small works service in Bottisham and the surrounding area.

FLOORING • HANGING NEW DOORS
KITCHEN RENOVATIONS • DECORATING •
TILING • LANDSCAPING
BESPOKE CARPENTRY



07703 043243

SNealCarpentry@Gmail.com
@S.Nealcarpentry

Dale Parker

*Landscape Gardener
and Tree Surgeon*

Turfing, Seeding & Planting,
Patos and Drives
Block Paving & Natural stone

Trees

Topping, Lopping,
Shaping and Felling
Hedge Cutting
Fencing

FREE ESTIMATES
Tel: 01284 728497
Mob: 07799 671010



ONG

“Successful entrepreneurs are givers and not takers of positive energy.” ANONYMOUS

codge.com
info@codge.com
01449 675 548

Design & Origination • Website Design & Maintenance • Email Marketing • Digital Publishing
• Logo Creation • Cartoons & Illustrations • Theatrical, Product Photography & Retouching •
Business Stationery • Promotional Flyers & Posters • Newsletters & Magazines • Programs &
Catalogues • Books & Brochures • Calendars • Reports • Signage, Displays & Banners •
Personal & Wedding Stationery • Mac Training



Are You Paying Too Much For Your Medical Insurance?

Independent And FREE Advice

- **Switch to an alternative scheme** – If you are currently insured, switching to a competitor can mean *substantially lower rates*
- **Pre-existing conditions covered** – It is often possible to include pre-existing medical conditions currently covered by your existing provider
- **Improve your coverage** – We can frequently improve your cover whilst also lowering the cost of your premium
- **Complexities of different schemes** – In many cases, people are over insured – we can ensure you are covered with a scheme that meets your individual needs and requirements
- **Full cover for cancer treatment** – Many policies do not cover cancer in full – we are able to advise on your current level of coverage



For further information, please call Simon Lively at
M&L Healthcare Solutions:-

FREephone 0800 145 5838 or 01223 881779

Email: simon.lively@mlhs.co.uk

quoting ref: The Cresset

M&L Healthcare Solutions is authorised and regulated by the Financial Conduct Authority. (FCA Reference number 554206)

PREMIER INVESTMENT MANAGEMENT SERVICES LTD

INDEPENDENT INVESTMENT ADVISERS Authorised &
Regulated by the Financial Conducts Authority

Specialist in Isa's & Isa Transfer's
Investment Planning & Portfolio Management

To arrange a free consultation ring **01223-882422** or email
pims@globalnet.co.uk or visit **www.pims-uk.com**



"Nesslands of Burwell"



Your local Dog Kennels, Cattery and Doggy Day Care!
Delivery and Collection Service Available !

Fully Licensed by ECDC and Veterinary Inspected.
Ness Road, Burwell. CB25 0DB www.nesslands.com

Call Tim or Anya on 01638 720623



1st Bottisham Scout Group Hiring Service

Bottisham Scout Headquarters is available for hire for
children's parties, dance lessons, meetings, keep-fit,
jumble sales, drama, music practice sessions etc.

For hall hire contact bottishamhuthire@outlook.com

Sab saint
andrews
bureau

THE PROPERTY SPECIALISTS

FOR ALL YOUR PROPERTY NEEDS

**Lettings - Sales
Estate Management - Insurance**

Your local independent property agency.
A family business operating since 1959.

**CALL OUR OFFICES TO ARRANGE A
FREE VALUTATION**

Kane Astin - kane@sab.co.uk

Cambridge
01223 352170

Swaffham Bulbeck
01223 352170

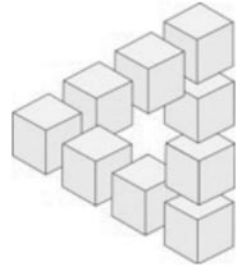
London
0203 786 3145

Hertford
01992 501752

Royston
01763 242222

Longstanton
01954 781963

sab.co.uk



INDEPENDENT FINANCIAL SOLUTIONS

You know that the State Pension is not enough, but you don't know what it will provide!

You want to save for your retirement, but you don't know what you will need!

You wish to protect your family against financial disaster, but don't know what cover you require!

You need to make your money work hard, but don't know which option is best for you!

You would like to reduce your tax bill, but you don't know how!

.....
Whether you own a company, are self employed, employed or retired, we can help!

We don't believe in adding to your problems.

We believe in clear and simple solutions.

Let us provide you with an **INDEPENDENT**
review of your financial situation.

**The value of investments and income from them may go down.
You may not get back the original amount invested.**

*Tax treatment is based on individual circumstances
and may be subject to change in the future*

Tel: 01638 615343 or Fax: 01638 615342
E-Mail: qc@independent-financialsolutions.co.uk
Website: www.independent-financialsolutions.co.uk

Newnham Farmhouse, 16 Low Road, Burwell, Cambs, CB25 0EJ
Partners: Quentin Cooke (authorised Independent Financial Adviser) & Alison Cooke



LET'S DANCE

Come and join us dancing on Saturday evenings in the New Main Hall at Bottisham Village College. We will have music for Ballroom, Latin American and popular Sequence dancing.

Dates:

February 8th - (Black Tie optional),
March 14th - (Black Tie optional), **April 4th, May 2nd**
Times 7.30pm - 10.00pm

The cost is £12 per couple. You are welcome to bring along your own refreshments. There is ample parking on site. For further information please contact: Frank and Sue Hancocks, 01638 741159 or check out our new website: www.letsdancecambridge.org

*Let's Dance Cambridge is a "not for profit" organisation established to provide dances for the community.

SECURE CONTAINER STORAGE

10ft and 20ft

IDEAL FOR BUSINESS OR PRIVATE STORAGE.
CONVENIENTLY LOCATED IN BOTTISHAM

Call 07841 930065



**ANDREW
HULME**
Chartered Accountant



12 Tunbridge Lane
Bottisham
Cambridge
CB25 9DU
Tel. 01223 811323
andrew@hulmeacc.co.uk

- Accounting
- Bookkeeping
- Club Accounts & CASC Assistance
- VAT Returns
- Management Accounting
- Personal Tax
- Business Advice



www.pettime-petcare.co.uk

No pet too small!

Dog walking
Cat, dog and small animal feeding visits
Dog home boarding
House and pet sitting
Doggy daycare

Contact Michele:

07765 791227

01638 508337

info@pettime-petcare.co.uk

All animals from hamsters to horses
cared for just as you would want.
Fully insured, first aid trained
and police-checked.

STEPWISE FOOTCARE

Vivien Honeyborne-Martins
MA(Cantab) BSc(Hons) MChS HPC Registered



Clinic-based Chiropody/Podiatry

- *Chiropody*
- Biomechanical assessment
- **SIDAS** orthotic therapy
- Children's foot problems
- *Foot/knee pain problems*
- **Lunula Laser™** fungal nail treatment
- **Swift Microwave** for verrucas

The Burwellness Centre, Unit 1, 10 Ness Road,
Burwell, Cambridge, CB25 0AA

Tel: 01638 741973

stepwise-footcare.co.uk vrmpost@hotmail.com

Tutor



Experienced tutor:

Fully qualified former primary school
teacher and home educator based in
Little Wilbraham

Expertise in:

Primary

Key Stage 3: Maths, English,

History & Geography

Study skills & revision techniques

For information and to arrange a free
meeting/consultation contact:

Anne-Marie McCubbin BA(Hons) PGCE

email: info@wingstoflyeducation.co.uk

tel: 01223 811939

Thoughts of a Sports Nut

One of my first nutty thoughts of the new year was that it might be fun to look back at the decade just completed and remember some of the remarkable, but lesser-known stories from around the world, that we may have overlooked. For example:

American Simone Biles became the world's most decorated gymnast, winning four Olympic gold medals and 19 World Championship titles between 2010 and 2019. The decade's top man in tennis is disputed between Novak Djokovic and Rafael Nadal, with the Serb winning most titles – 15 Grand Slams – but the Spaniard entering 2020 as world no. 1. The world's most successful female Paralympian is GB's Sarah Storey, who won seven gold medals during the 2010s, bringing her personal lifetime haul to 14. American boxer 'Pretty Boy' Floyd Mayweather retired for the second time in 2017, after beating Mixed Martial Arts specialist Conor McGregor in a one-off bout, finishing with a perfect record of 50 fights, 50 wins. Another returning retiree was US swimmer Michael Phelps whose five gold medals in the 2016 Rio Olympics took his personal tally to 23. But I'll give my own Sports Nut Outstanding Achievement Award to Kenya's Eliud Kipchoge who became the first man in history to run a sub-two-hour marathon. His run at a special event in Vienna on 12th October 2019 was timed at 1:59:40, but it doesn't count as an official world record because certain pace-making and drinking rules of standard competitions were not followed!

A few days before Christmas, we received the sad news that a 'giant' of British sport had passed away. A key player in Alf Ramsey's 'wingless wonders', Martin Peters was one of the younger members of the England 1966 World Cup winning team – a mere 23 at the time – and secured his place in history by scoring England's second goal in the final against West Germany. But his contribution to football was considerably more far-reaching than that: he helped to shape the modern game as a pioneer of the attacking midfielder role which, later, proved to be so fruitful for players like Gerrard and Lampard. He was a 'complete' player in the sense that he was a fine athlete who could run, tackle, pass, shoot, head, and find space where others couldn't. Widely considered to be 'ahead of his time' in his ability to arrive in goalscoring positions, late and unmarked, he put away 178 goals in 727 professional matches and 20 for England in 67 matches – a phenomenal record for a midfielder. He loved playing football so much he ended up playing for Gorleston in the Eastern Counties League! How sad then that he suffered from Alzheimer's disease in his final years and became the fifth player of that great England team to be taken. RIP Martin Peters MBE.

Never one to cause any aggravation to referees, I wonder what Peters would have made of the VAR debacle in the modern game. The last couple of months have seen more controversy than ever, as the prolonged forensic analysis of offside decisions continues to suck the joy out of some of football's most (potentially) exciting moments. BUT... there may be some relief coming over the horizon!

(Sports Nut continued on page 45)

Bottisham

Post Office and Village Stores

12 High Street Bottisham Cambridge CB25 9DA

Tel: 01223 811281 PO Tel: 01223 812863

Shop opening: 5.30am - 9.00pm 7 Days

Post Office: 9am - 5.30pm Sat 9.00am - 2.00pm

Your All-in-One Shop

Groceries, chilled & frozen food, delicatessen, confectionery, off-licence, haberdashery, household, healthcare, stationery and greeting cards.

Free local delivery of grocery orders

TV licence, Top-ups, elec/gas keys/tokens, money transfer, phone cards, congestion charges.

Newsagency with home delivery to Bottisham, Lode, Longmeadow, Quy,

Six Mile Bottom and Swaffham Bulbeck. Dry Cleaning & Floral Service

FREE TO USE ATM MACHINE

Vehicle Licences • Personal Banking • Foreign Exchange

Phone Cards & Mobile Top-Ups • On-line Lottery.

Rothwell's Carpet Cleaning

**Thorough, professional cleaning of Carpets, Upholstery,
Rugs, Tile & Grout and Natural Stone floors.**

- 'Truck mount' cleaning system
- Family firm est 1993
- Great customer service
- We move all the furniture
- Fully Insured
- Highly trained & experienced
- **100% satisfaction or its free**

*If you use us,
you'll recommend us!*



M2391

For a quote
or advice please
07545 962 026
01223 832 928
www.rothwells.biz

(Sports Nut continued.)

Lukas Brud, general secretary of the International Football Association Board, finally broke his silence at the turn of the year with a priceless understatement. Promising that some new guidance would be issued after IFAB's AGM in February, he declared "We see some things that are going in a direction that we may need to re-adjust." And the thrust of his comments seemed to suggest that they might adopt the 'clear and obvious error' test to offside decisions in the future. I would like to think this more sensible approach – which, incidentally, would bring the Assistant Referee (linesman) back into a meaningful decision-making role – would eradicate the nonsense of drawing lines on screens and checking whether an armpit was ahead of a toenail before awarding or disallowing a goal! I only hope they don't try and introduce changes mid-season and cause a fresh rumpus over double standards. We've already had a bellyful of the nonsensical whingeing from lower league clubs who perceive that injustices have occurred in the FA Cup due to VAR being present only in ties hosted by Premier League teams! Aaaargh!

Talking of proposed rule changes, the International Cricket Council has floated the idea of reducing the number of days in a standard test match from five to four. Whilst one recognises that many tests these days do not go the full distance, mainly due (in my humble opinion) to reckless, limited-over style batting, the loss of the fifth day would irrevocably alter the very essence of the game, an argument beautifully demonstrated in England's second test in South Africa. Dom Sibley's patient century would not have been possible had England been pushed for time in accumulating a match-winning lead, and cricket fans everywhere would have been denied the spectacle of an explosive final session on the fifth day in which 'Sir' Ben Stokes mopped up the home tail for a glorious victory when the Proteas looked like hanging on for a nail-biting draw! LEAVE TEST CRICKET ALONE!

Following on from last month's coverage of the local darts league, how many of you, I wonder, knew that Bottisham had its own table tennis team? Well it does! The Bottisham Community Sports and Social Club team is currently holding its own in Division 4 of the Ely & District League, playing home games on Wednesday evenings and away games on different days. Matches are held between teams of three and BCSSC has six registered players at the present time, but there's always room for more. So if you know your 'pimples' from your 'inverted rubber', or your 'penhold' from your 'shakehand', or even if you simply have an eye for a ball, please feel free to pop down to the club on a Tuesday practice night and you'll be warmly welcomed.

TTFN - Gerry Daish



Copy deadline for next issue is 14 February.

Please send material to the editor at BottishamCresset@gmail.com

COMPLETE PLASTERING

TILING • DRYLINING • ALL BUILDING WORK
CARPENTRY • SCREEDING
LIME PLASTERING • PAINTING & DECORATING

Covering all of Cambridgeshire

CONTACT: GLENN WARDER

TEL. 01223 811991
MOB 07734 904050

E-MAIL: COMPLETEPLASTERING@MSN.COM
RELIABLE SERVICE FREE ESTIMATES

Chiropody

In your own home

Save £5
off your first treatment
when you present this advert.

Call **07905 267114** for an appointment

Daniel Harris BSc Hons MChS
Fully qualified and Registered with Health Care Professions Council



DRAIN-PLUMB

*Plumbing, Heating & Drain
Services*

BLOCKED DRAINS CLEARED

- Gas Boiler Service & Maintenance
- Power Flushing of Boilers & Heating Systems
- Home Buyers CCTV Drain & Plumbing Surveys
- All Plumbing & Heating Repairs/Alterations
- All work Guaranteed

TEL: 01638 742873
MOB: 07932 773515

7 NESS ROAD,
BURWELL
CAMBRIDGE, CB25 0AA

BED AND BREAKFAST

THE MEADOW HOUSE

2A High Street, Burwell,
Cambridge. CB25 0HB



- En-suite rooms with colour TV.
- Large car park and grounds.
- Family rooms, children welcome.
- English Tourist Board 4 Diamonds.

*Self catering cottage also available
at Swaffham Prior.*

Brian and Hilary Marsh

Tel: 01638 741926

Fax: 01638 741861

Website: www.themeadowhouse.co.uk

SQUEAKY MOUSE

Local, Professional,
Computer Help
and
Support

www.squeakymouse.com

01223 852872

support@squeakymouse.com

**POWER CONTROL PANELS
(CAMBRIDGE) Ltd.**

Also trading as
DB Electrical & Building Services

Dale Badcock
07718 122538

dale.pcp@gmail.com



All domestic work undertaken

- Rewiring
- Lighting
- Burglar alarms
- Security lighting
- Lighting design
- Controls Specialist
- Renovations
- Alterations
- Kitchens & Bathrooms

Unit 2 Barnwell Business Park
Cambridge CB5 8UX
01223 212054
powercontrolpanels@gmail.com



Rebecca Golding
now has her new salon
in Burwell

Tues
9.30am-8pm

Thurs
9.30am-8pm



30 Years'
Experience
All aspects of
Hairdressing

Tel. 07742 997474

Free Parking at
67 Silver Street
Burwell, CB25 0EF



**TIM PHILLIPS
& Co.
Accountants**

Independent, specialist service for:
**Small Business • Self Assessment
Personal Taxation**

Free initial consultation – no obligation
EASY, FREE PARKING

Copley Hill Business Park, Cambridge Rd., Babraham
Off A1307 between Wandlebury and Babraham

Tel: 01223 830044. www.tpaccounts.co.uk

LOOKING BEYOND THE END OF OUR NOSE...

I would like to start close to home by commending the article in last month's Cresset from the Bottisham Medical Practice. The article outlined the Practice's considerable concerns with maintaining a 'fit for purpose' medical centre should the proposed Retirement Village get approval. I'm told that comment has been made by representatives of the facilitating company at recent presentations that medical care packages will alleviate the strain on the local medical practice. But this does not negate the fact that every single person, medical care package or not, retains the right of access to a GP.

Those that are interested in such a scheme should ask themselves whether they can rely on the assurances made by an organisation that sits three times removed from the company who would eventually manage the facility. Because it is the latter, not the facilitating company, who would be charged with providing and maintaining the onsite 'facilities' - including medical care and community access. Here is a quote taken from the blurb of the same company for a similar development in Stapleford; Exact range and availability (of facilities) are subject to the selection of a preferred retirement village operator. Do visit the website at: <http://www.axislp.com/stapleford-down/>.

For me personally it's not what but where that's the most important issue. I don't understand the justification, other than for financial gain, why a beautiful and protected biodiversity of countryside - our last remaining meadow on relatively rare chalk grassland - should be concreted over when there is un-protected and open farmland elsewhere. The scheme does not present an obvious 'special case' sufficient to warrant our Greenbelt and countryside being pillaged in this way.

If you would like to support the Medical Practice position then write to Steve Gilson, Chair of Bottisham Patient Participation Group at the Medical Centre, Tunbridge Lane.

There is by the way some encouraging news for The Meadow and its surrounding Greenbelt. A second application to build on Greenbelt land in that locality has again been refused because of the areas protected status. And I also understand that all of the trees in The Meadow now have Tree Preservation Orders (TPOs) placed on them. Furthermore East Cambs has been reminded that the path running parallel to The Meadow along the back of Cedar and Maple Close is an officially designated 'public footpath' rather than a track open to motorised vehicles. Much of this outcome has resulted from proactive lobbying by an autonomous group in the village.

Now, a little further away from home; it's being suggested that our judges seem unable to see beyond the end of their nose when making judgements these days. I'm not referring to the Supreme Court that chose, some say unlawfully, to challenge the Government on matters of Parliament but to the recent ruling in favour of a gentleman who claims he was sacked because of his Vegan beliefs rather than for gross misconduct at work. While this is

ARCHITECTURAL DRAWINGS

FOR

PLANNING & BUILDING REGULATION APPLICATIONS

NEW PROPERTIES, EXTENSIONS, LOFT CONVERSIONS ETC

CONTACT US now to arrange a FREE on-site meeting at your convenience to discuss your project.

ELY DESIGN GROUP

'Architecture by Professionals'

www.elydesigngroup.co.uk

01353 649649

mail@elydesigngroup.co.uk

Lloyds Gardens

Friendly Affordable Reliable Gardening Service

- All aspects of tree surgery
- Stump grinding
- Root ball removal
- Tree houses
- Garden Structures
- Bespoke clay pizza ovens

FULLY ACCREDITED AND INSURED

ALL WORK CARRIED OUT TO BS 3998 STANDARD
MANY HAPPY REFERENCES AVAILABLE ON REQUEST

Tel: 01638 744140

Mob: 07811 132709

WWW.LLOYDSGARDENS.ME.UK



(Jolley Old World continued from page 49)

the first case concerning ‘ethical veganism’, a previous tribunal ruled that a strongly held belief in ‘climate change’ amounted to a ‘philosophical belief’ capable of protecting someone against unfairness in their employment. The judgement in the vegan case states that: “ethical veganism is a philosophical belief and is therefore protected by law under the Equality Act 2010”. But the question now being asked of these rulings is whether the belief is nothing more than a matter of personal choice?

For a belief to be protected under the Act, it must meet a series of tests including not conflicting with the fundamental rights of others. And herein lies the problem; in some cases these ‘philosophical beliefs’ will, unlike religious beliefs, conflict with the fundamental rights of others, i.e. to go about their lawful business and their right to make choices. So, for example, could a worker on a supermarket checkout refuse to put a meat or honey product through the till? Could a warehouse worker refuse to process a package containing non-recyclable materials? Could a person refuse to assist someone with a guide dog because the animal is being exploited? Could a transport operative refuse to use a vehicle because it was petrol or diesel powered?

Those who are uneasy of the ruling suggest that the implications are far reaching, not least because the legal protection will apply beyond employment to areas such as education, the supply of goods and services and society in general. It could also mean that holders of such beliefs are, through their own ‘personal choice’, making themselves unemployable. Positive discrimination in this way could and would likely encourage ‘mischief makers’ to dream up cults and to then, as a veneer of respectability, claim that in a democratic society they are worthy of respect.

So, may be judges should look beyond the end of their nose toward the fundamental rights of a wider society - to go about their lawful business and their right to make choices – as opposed to the narrow and solitary rights of a so called ‘philosophical belief’....

**“There is no such thing as ‘old people’ -
just young people who have lived a lot longer”**

- Patricia Frank in I Newspaper.

Copy deadline for next issue is 14 February.

*Please send material to the editor
at BottishamCresset@gmail.com*



J&J DRAKE



Fully approved electrical contractor

- All Work Certificated in Accordance with NICEIC
- Free no obligation quotations
- All aspects of electrical work undertaken such as re-wires, Periodic test and inspections, maintenance calls, New build Installations.
- However small you may consider your job it will be treated with the same attention to detail as every one of our jobs.

Your Local Electrician

Unit 24, Hall Barn Road Industrial Estate, Isleham, Ely, Cambs. CB7 5RJ
Contact us on: 01638 781567 / enquiries@jandjdrake.co.uk



Specialists in Military Fine Art & Framing

- Gallery open by prior arrangement
- All types of framing undertaken to match your budget
- Latest prints & rare secondary market art
- Military art collections purchased
- Find us on Facebook

Gallery & Framing Services at 83 Longmeadow, Lode

www.merlinaviationart.com

Email: hello@merlinaviationart.com

Tel: 01223 751545

T
P
M



**Taylor
Property
Management**

Your letting property is a key asset in your life, ARE you getting full value from it?

If you are not and you want a service that will release it's full potential and a free rental appraisal then come to the people that are able to offer you a "Taylored" package to suit your needs.

We offer a full comprehensive property management service, just as though the property was our own all at affordable rates to suit you:

FREE Energy performance certificate

FREE Initial letting fee

For your own personal service contact

Steve Taylor on 01638 741717 or 07753 272765 or email steve@tayloredpm.co.uk
9 Station Gate, Burwell, CB25 0BZ



**CHAPEL
DENTAL**

84 Angle End
Gt. Wilbraham
CB21 5JG
Tel: 01223 811844

Claire Jackman BDS & Associates

NHS, DENPLAN & PRIVATE TREATMENTS

With special interests in implants and orthodontics

Monday / Wednesday / Thursday / Friday 09.00-17.00

Tuesday 09.00-19.00 Saturday 09.30-15.00

New Patients Always Welcome

www.chapel.dental

REFLEXOLOGY

For Health and Vitality

Reflexology has been
an effective treatment for:

- Migraine • Back Pain • Infertility • Arthritis
- Sleep Disorders • Hormonal Disorders (Including PMT) • Sports Injuries • Digestive Disorders • Relaxation • Stress Related Conditions (exams, work, home, life) • Little people in nappies! (BabyFlex) • Men and Women, young and old.

Jennie A Fatibene MAR MBFVEA
Tel: 01223 811045

** Gift vouchers available **

BURWELL COMPUTERS

We provide a full range of
computer repairs and information
technology support services to
businesses and home users.

- VIRUS & SECURITY • EMAIL & INTERNET
- BROADBAND • WIRELESS • ROUTERS
- NETWORKS • SERVERS • UPGRADES
- REPAIRS • NETWORK CABLING

Tel/Fax: **01638 742702**
Mobile: **07901 556895**

support@burwellcomputers.co.uk
www.burwellcomputers.co.uk

At Wired we don't have problems - only solutions



We offer solutions for all your Aerial, Freesat, CCTV, Telephone
and Data Cabling needs.

No job is too big or too small for our engineers.

With no call centres, you will be able to speak directly to the engineer.

We offer an efficient, cost effective and friendly service.

Contact us now for a no obligation quote.

Contact us NOW for a free no obligation quote

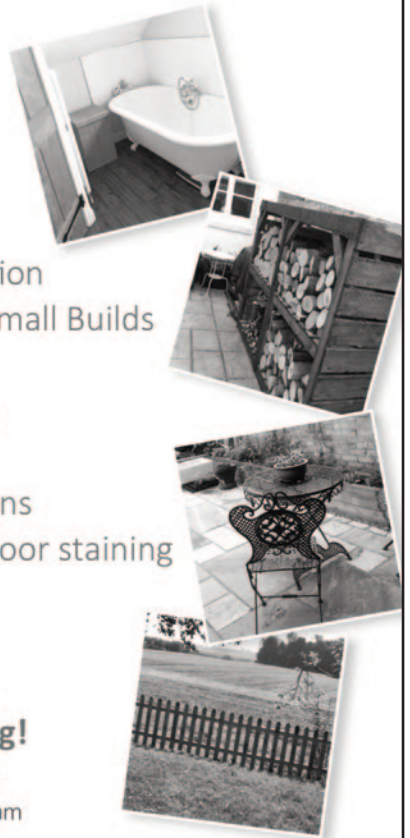
01638 281234 / 07761 572186

www.allwired.co.uk
info@allwired.co.uk



My Village Handyman Services

- DIY repairs and odd jobs
- Painting & Decorating
- Tiling, Flooring & Patios
- Gardening, Landscaping, Fencing & Decking
- Kitchen & Bathroom installation
- Brickwork, Dry Walling and Small Builds
- Carpentry and Plumbing
- Window and Gutter cleaning
- Jet wash and Patio cleaning
- Rubbish clearance and Tip runs
- Carpet cleaning and Wood Floor staining
- New doors or locks
- TV and Audio Installations
- Security and Garden lighting
- **No job is too Small or too Big!**



Free no obligation quotes and advice provided
Your very local Handyman from Great Wilbraham

Contact us to arrange a visit or quote
07484 637084 or **01223 881700**

Email: info@myvillagehandyman.com | www.myvillagehandyman.com

HARRISONS OF BURWELL LTD

Plumbing and Heating

FREE ESTIMATES GIVEN

Gas Boiler Servicing

Clarence House, 7 Ness Road, Burwell, Cambs CB25 0AA
Telephone: Newmarket 01638 742873 - Mobile 07932 773515
email: harrisonsofburwell@gmail.com

Gas Safe Registered

HAYDEN

THE CLEANING SPECIALIST

Merrywood
8 Lode Rd. Bottisham CB25 9DJ
01223 813766 or 07919561665
Email: hayden.woodruff@btinternet.com

WOULD YOU LIKE YOUR CARPETS
OR UPHOLSTERY CLEANED?

HAYDEN IS LOCAL TO THE AREA,
OFFERING FREE QUOTATIONS
AND ADVICE

WE ALSO CLEAN WINDOWS WITH
OUR NEW REACH AND WASH
SYSTEM OR TRADITIONAL, YOUR
CHOICE

k-domestic electrical solutions



Complete installations & rewires
Small and large alterations
Lighting
Internal & External work
PAT testing
Periodic Inspection & Reports
Full Inspection, Testing,
Verification & Certificate issue
LED
Under Floor Heating
Voltage Optimization

your **local** electrical service of choice and recommendation

Karl Howe
01638 610438 M: 07541 008613

Email: enquire@k-elecsolutions.com Website: www.k-elecsolutions.com

Fully qualified Part P and 17th Edition

**City &
Guilds**
Qualified



NEED A NEW FENCE ?

- Reliable local company. Established 2007.
- Over 1000 local installations.
- Choice of colours & sizes.
- NEVER PAINT A FENCE AGAIN.
- Will withstand storm force winds.
- 25 years guaranteed product.
- Numerous local testimonials available.



For a **free, no obligation**, site survey and quote.

Call us now on 01223 811160

www.colourfencecambs.co.uk

Bottisham Vehicle Services Ltd.

Reliable, Friendly, Professional

Service and repairs to all makes,

MOT testing, tyres, air conditioning

Courtesy car available

Local collection and delivery

10 Tunbridge Lane, Bottisham, Cambridge CB25 9DU

01223 811919 • simon@bvsltd.net • www.bvsltd.net

'Your Friendly, Local Wood Burning Stove Specialist'



VISIT OUR SHOWROOM!

**The Stone Yard,
Whitelands Farm,
Newmarket Road,
Bottisham,
Cambridge.
CB25 9BD**

Opening hours have changed

Monday - Closed

Tuesday-Thursday


10.00-2.00pm

Friday - Closed

Saturday - 12.30-3.00pm*

- Sunday closed

**Seasonal opening,
please check website*

 **01223 703184**

Email: sarah@cambridgestoves.co.uk

www.cambridgestoves.co.uk

**CALL NOW FOR YOUR FREE, NO
OBLIGATION SURVEY AND
QUOTATION, OR CALL IN AT OUR
SHOWROOM**

**ALL ASPECTS OF BUILDING WORKS TO
YOUR FIREPLACE UNDERTAKEN**

**FAST, RELIABLE AND EFFICIENT
SERVICE CARRIED OUT BY QUALIFIED
HETAS ENGINEERS**

**LARGE SELECTION OF WOOD
BURNING STOVES AND FIRESIDE
ACCESSORIES ON DISPLAY**



**MOVING TO NEW
PREMISES MID
SEPTEMBER**

**PLEASE CHECK WEBSITE FOR
DETAILS**

MOBILITY EQUIPMENT

STAIRLIFTS, SCOOTERS, WHEELCHAIRS, RISING CHAIRS AND
BEDS, WALKERS, TOILET & BATHING AIDS, KITCHEN &
HOUSEHOLD AIDS, CONTINENCE CARE, FOOTWEAR

SPARES, SERVICE, HIRE OF EQUIPMENT
HOME VISITS AVAILABLE
FRIENDLY AND CONSIDERATE SERVICE GUARANTEED



SCOTSDALES GARDEN CENTRE
HORNINGSEA
CB25 9JG
01223 863908
www.orchard-mobility.co.uk

Monday to Saturday 9.00 – 5.00

Bottisham Parish Council

CHAIR

JON OGBORN

VICE CHAIR

WILLIAM CLARKE

PARISH COUNCILLOR

CHRISTINE BRYANT

HILDA BUCHANAN

LEE CHETWYND

LINO DI LORENZO

VICTORIA MARSH

PETER MARTIN

STEVEN O'DELL

BILL SUNNER

LAURIE VAN SOMEREI

NEIL WINKCUP

DISTRICT COUNCILLOR

CHARLOTTE CANE

JOHN TRAPP

COUNTY COUNCILLOR

MATHEW SHUTER

PARISH CLERK

CLAIRE FULLWOOD

BOTTISHAM COMMUNITY LIBRARY ASSOCIATION

LIBRARY OPENING HOURS

Monday	Closed
Tuesday	3-5pm and 6-8pm
Wednesday	10-11.30am
Thursday	3-5pm
Friday	6-8pm
Saturday	10am-12noon

*Working in Partnership with the
County Library Service.*

Useful Information

Bottisham Website:	WWW.BOTTISHAMPC.CO.UK
Holy Trinity Church: Revd Sue Giles	812726
Roman Catholic Priest: Monsignor Eugène Harkness. Parish of St Philip Howard	01223 211235
RE:NEW/Lode Chapel: Rev. Alan Brand	01223 812558
Bottisham Surgery:	
Enquiries and Appointments	810030
Out of Hours only - Urgentcare Cambridge	111
Bottisham Library:	812354
Library hours: Monday Closed; Tuesday 3-5pm and 6-8pm; Wednesday 10-11.30am	
Thursday 3-5pm; Friday 6-8pm; Saturday 10am-12noon	
Cambridgeshire Police HQ:	01480 456111
Cambridgeshire Police:	(NON-URGENT MATTERS) ring 101 - In EMERGENCIES ring 999
Police community support officer Ann Austin PCSO 7353 at Ely Police Station	Contact through 101
1st Bottisham Rainbows/1st Bottisham Brownies: Kay Pearce	811055
Bottisham & District Gardening Club: Secretary: Julia Green	811467
Bottisham Bowling Club: Keith Gibson, Secretary	811049
Bottisham Carpet Bowls Club: Nora Watson	812121
Bottisham Community Primary School:	811235
Bottisham Cricket Club: Martin Wilson	07768 031979
Chairman: Will Allen	07801 580604
Bottisham Local Charities Trustees: Clerk - Coral Hatley	811457
Bottisham Pharmacy:	812321
Bottisham Pool Association: Manager - Jason Rye	811121
Bottisham Royal British Legion Branch: Secretary. Peter Walker	811402
Branch Chairman: Dave Frost	www.Britishlegion.org.uk/branches/bottisham
Bottisham Scout Group: Group Contact: Linda Jones	813040
Bottisham Community Sports and Social Club: Secretary Graham Darling, Bottishamcsasc@gmail.com	812063
Bottisham Village College, School:	811250
Evening Classes, Clubs and Youth Club Information	811372
Bottisham W.I.: Secretary - Jenn White • mrandjw@btinternet.com	811600
Bottisham Youth Football Club: Jim Tideswell	812591
Cambridgeshire County Councillor: Mathew Shuter	01638 508729
East Cambridgeshire District Offices:	01353 665555
East Cambridgeshire District Councillors: Charlotte Cane 34 Swaffham Road, Reach	07976 607512
John Trapp 104 Commercial End, Swaffham Bulbeck	01223 812120
Girlguiding Bottisham District: Cambs East County office • www.cambseastguides.org.uk	01223 813917
Parish Council Chairman: Jon Ogborn	07486 372780
Parish Council Clerk: Claire Fullwood	07914 219732
Queen's Court Day Centre:	811905
MP for Cambs South East Constituency: Lucy Frazer, House of Commons, London SW1A 0AA	
E. lucy.frazer.mp@parliament.uk W. www.lucyfrazer.org.uk	
Cambridgeshire Trading Standards Helpdesk:	0845 3030666
Saplings Preschool:	813226
Milton Road Tip: Apr to Sept - Weekdays 9.00am-8.00pm; Weekends 9.00am-6.00pm	860674
Oct to Mar - 9.00am-4.00pm	
CRESSET Editor:	email: BottishamCresset@gmail.com
Treasurer, Advertising rates and payment: Rhona Walker, 94 High Street, Bottisham	811402
Distribution: Ian & Helen Cole	812573
Design/Artwork: ONG (Old Newton Graphics) • www.codge.com	01449 675548

The Cresset: While every effort is made to ensure accuracy we cannot accept liability for any mistakes or misprints. The views of, or any opinions expressed, are **not** those of the EDITOR. The Editor cannot accept any responsibility for statements made in advertisements.

MANCHETTS

Car Truck & Van Centre



Van Hire from £49

01638 661113

www.manchetts.co.uk

1 Victoria Way Studlands Industrial Estate Newmarket Suffolk CB8 7SH

E.C. AUTOCARE

(Est. 1980)



SERVICING & REPAIRS
Cars & Light Commercial
Diesel & Petrol



MOT TESTING STATION

**Servicing to all makes of Cars
& Light Commercial**

- ✚ **ENGINE MANAGEMENT DIAGNOSTICS**
- ✚ **TYRE - BRAKES - EXHAUSTS**
- ✚ **AIR CONDITIONING SERVICING**
- ✚ **GEARBOX SPECIALISTS** MANUAL & AUTOMATIC

FAST, FRIENDLY, FAMILY BUSINESS

56 HIGH STREET, BOTTISHAM

Also at

A1303 SERVICE STATION, BOTTISHAM
(behind Brian McKay)

Tel.01223 811122 or 01223 812357

